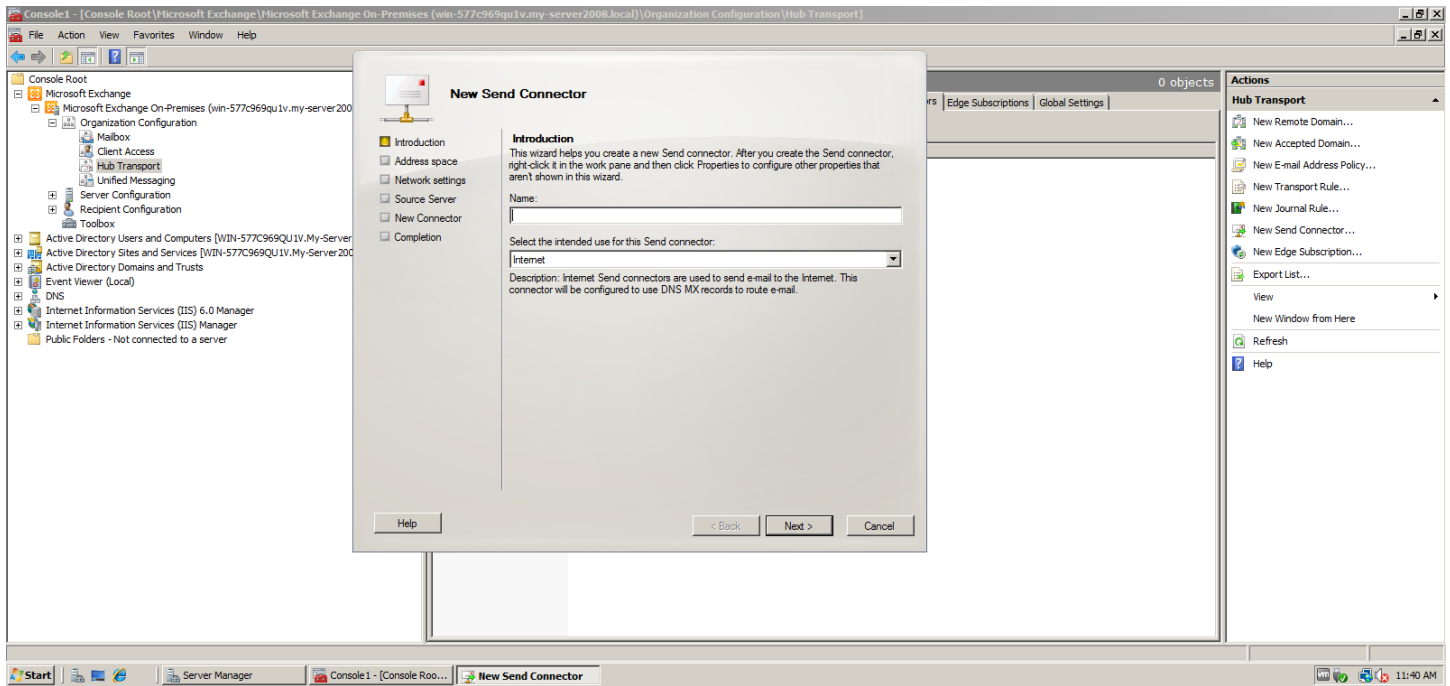
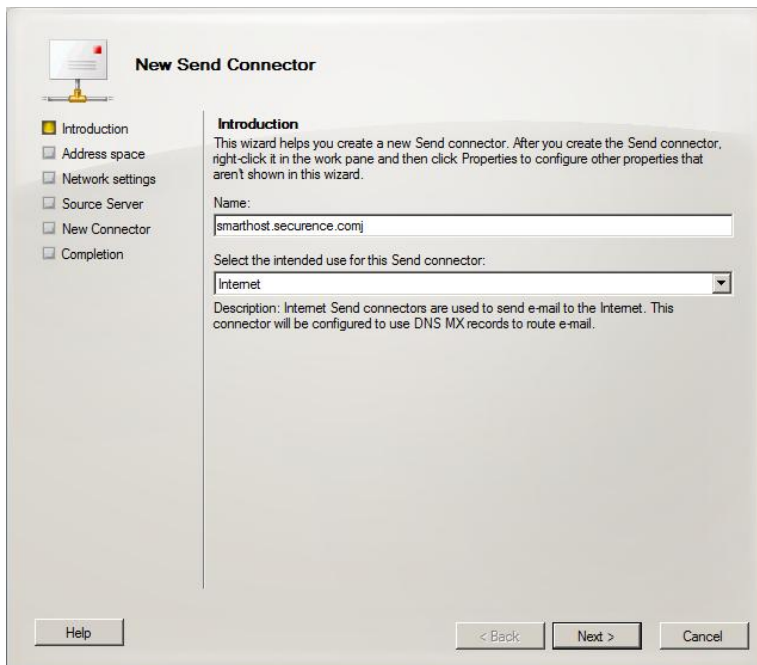


Configure Smarthost on Exchange 2010

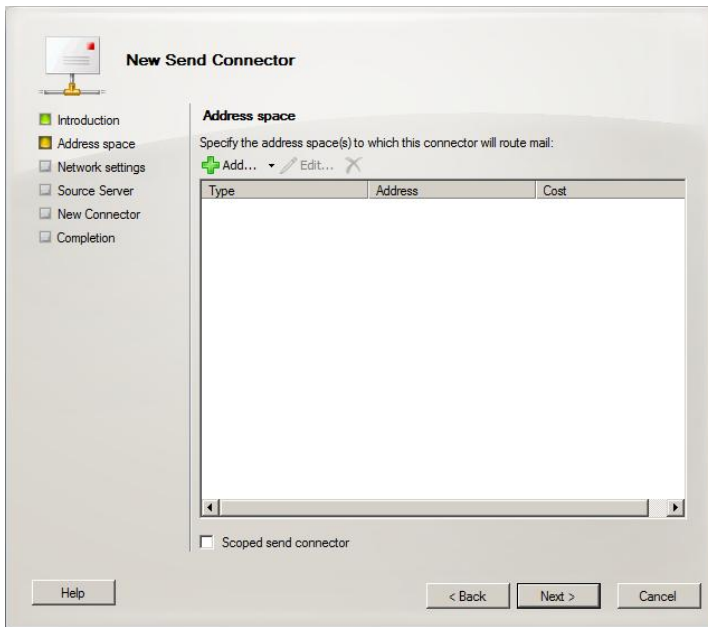
Open Hub Transport and click on Send Connectors Tab. In the Actions pane select New Send Connector.



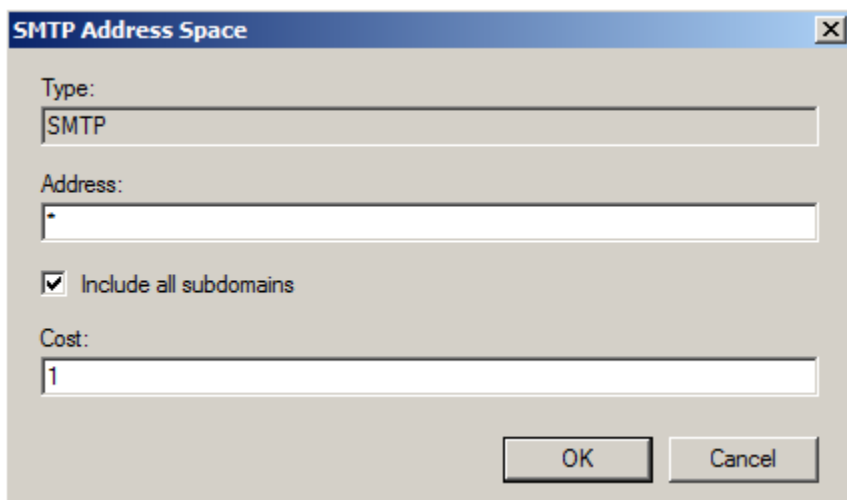
On the first page of the wizard type the name of the connector (this can be anything, but I put smarthost.securrence.com in case a customer may have more than one connector.) The intended use for this connector will be Internet.



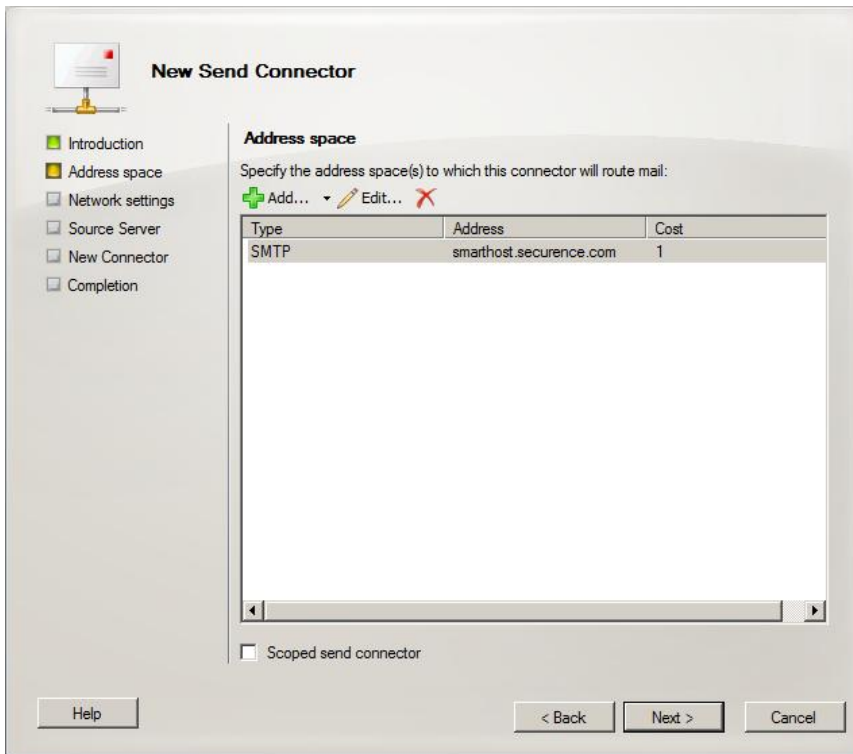
Next will be the Address space page, click Add.



Here the Type will be SMTP, Address *, check include all subdomains and the cost should be 1.

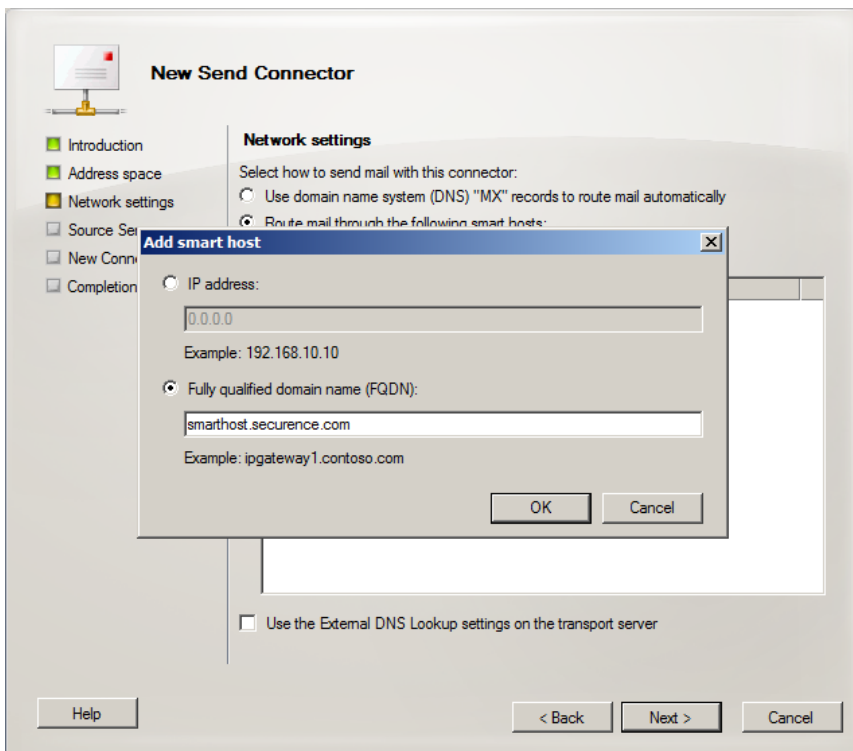


Once that is completed, the page should look like this. Click Next.

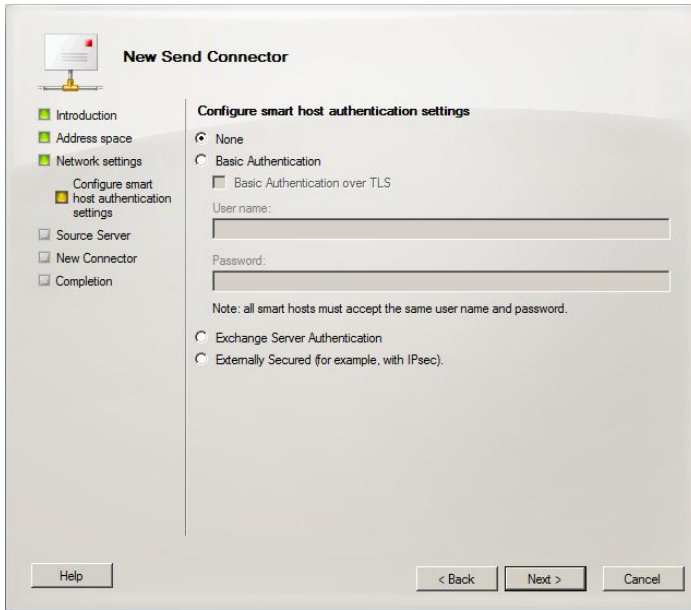


You will then be need to choose the network settings. Click 'Route mail through the following smarthosts' and type in the FQDN.

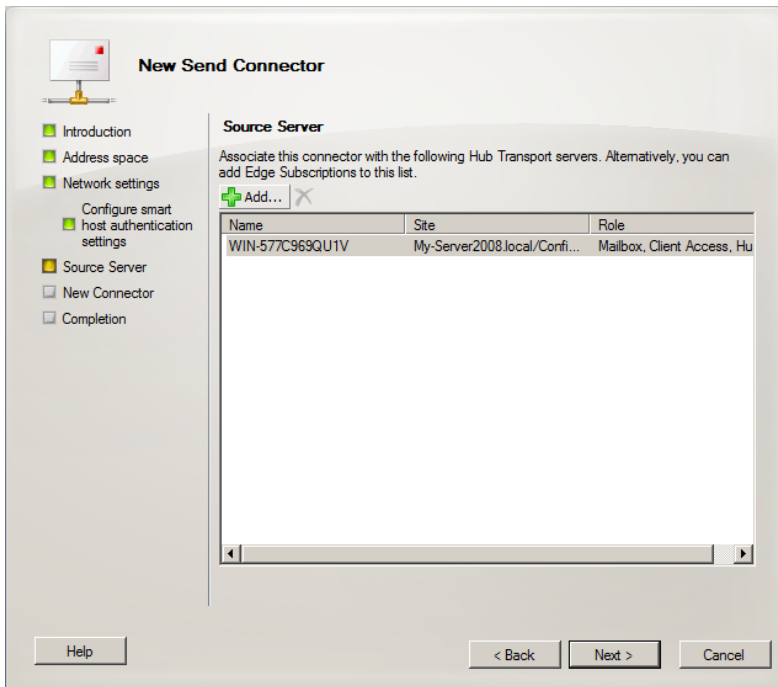
smarthost.securrence.com. Click Ok.



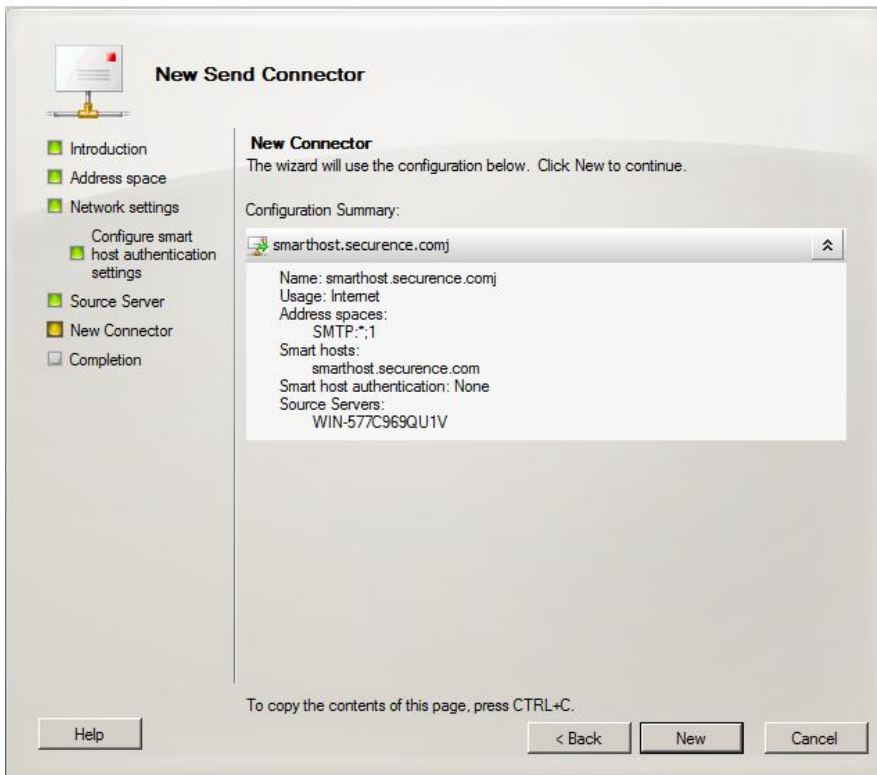
Next page will be Configure smart host authentication settings. Choose None, and Click Next.



Next, you will choose the Source Server, This will most likely be filled in already. Click Next.



Next page will give you the configuration summary. Click New.



If everything went okay, you will get the page completion, and the new connector will display 'Completed'. Click Finish.

