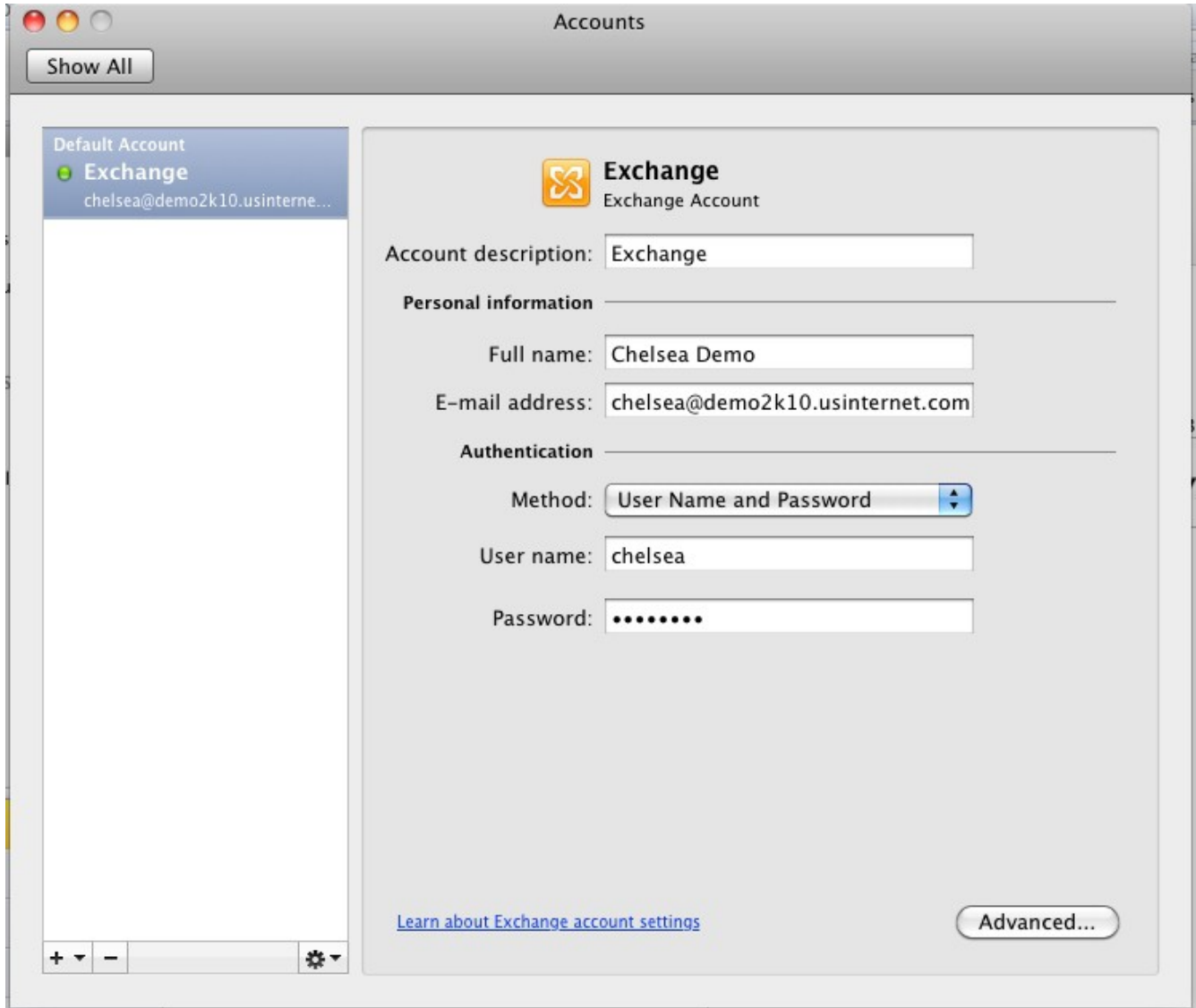


Exchange 2010 with Outlook 2001 for Mac



Click advanced at the bottom of the screen and enter in your server name. The rest of the settings stay as default.

Accounts

Show All

Server Delegates Security

Microsoft Exchange

Server: :

- Override default port
- Use SSL to connect (recommended)
- Download headers only

Directory service

Server: :

- Override default port
- Use SSL to connect (recommended)
- Log in with my Exchange account credentials

Maximum number of results to return:

Search base:

[Learn about Exchange account settings](#)

Cancel

OK